



WebSense Enterprise® IM Attachment Manager™ is an add-on module that enables IT managers to control the sending and receiving of files via instant messaging (IM) clients. WebSense Enterprise itself enables IT managers to establish flexible IM use policies. IM Attachment Manager enhances that capability in two ways: It controls the security and legal risks posed by the unmanaged use of IM attachments, and it helps optimize IT resource allocation and employee productivity.

Managing the risks of public IM clients

Instant Messaging has grown in popularity because it combines the convenience of email with the immediacy of the telephone. In the workplace, IM can contribute significantly to productivity by promoting collaboration and team-building among employees, partners, and customers. Many organizations hesitate to make use of this attractive tool, because of justified concerns about security, legal liability, and additional demands on network bandwidth.

WebSense Enterprise, the industry's leading Employee Internet Management solution, provides a basic level of management for IM. By means of the policy control offered by WebSense Enterprise, the IT administrator may bar the use of IM by employees or may permit the use of specific IM clients and restrict IM use to certain users or groups and to certain times of day.

The risk of not managing IM attachments

In order to reap the full business benefits of IM, and to minimize the potential risks, organizations need to manage the use of IM to transfer attached files. In the typical network configuration, files transferred by IM do not pass through the network's antivirus shield, which is deployed at the Internet gateway. A virus in such a file could spread rapidly through the network.

Heavy use of IM and especially of IM file transfer can create a heavy load on network bandwidth, with consequent degradation of performance even for business-critical applications.

The unmanaged use of IM file transfer poses the additional risk of purposeful or accidental disclosure of intellectual property or other proprietary information. In addition, the sharing of inappropriate content, such as pornography, over the network raises the specter of legal liability.

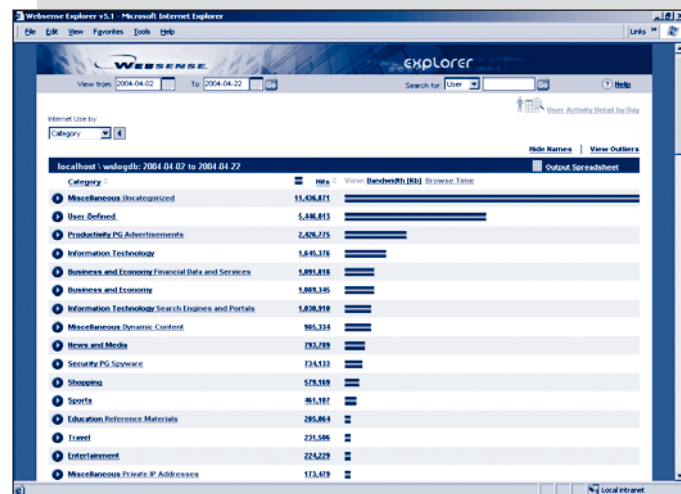
The IM Attachment Manager solution

WebSense Enterprise provides organizations with a highly flexible policy-based solution for managing the use of IM clients by preventing access to websites from which IM clients can be downloaded, and by managing IM network protocols. The IM Attachment Manager module adds a unique and comprehensive solution that enables organizations to implement policies governing the use of IM file attachments by employees. IM Attachment Manager seamlessly integrates with the WebSense Enterprise solution with minimal deployment effort.

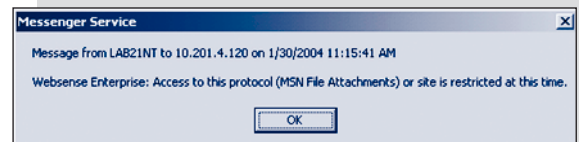
WebSense Enterprise® IM Attachment Manager™

IM Attachment Manager helps organizations:

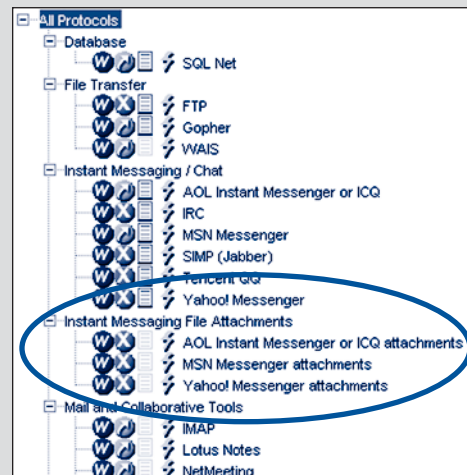
- Mitigate security threats due to malware-infected files carrying viruses, worms, Trojan horses, or spyware.
- Minimize loss of intellectual property.
- Limit liability from the illegal sharing of copyrighted materials or from sharing of improper content.
- Reduce bandwidth consumption from non-business-related file transfers.



Detect risks from IM file attachments using WebSense Enterprise Explorer.



Alert end-users when outgoing or incoming IM file attachments are blocked.



Set policies by user or group for allowing or blocking IM file attachments.

IM Attachment Manager enables the network administrator to:

- Block or allow file attachments over the most popular IM applications:
 - AOL® Instant Messenger
 - Microsoft® MSN Messenger
 - Yahoo!® Messenger
- Define custom IM file attachment policies using options such as users, groups, time of day and day of week.
- Provide real-time and historical views of company risks related to employee use of IM file attachments.
- Manage IM file attachments dynamically based on total network usage with the Websense Enterprise Bandwidth Optimizer™ module to ensure network bandwidth availability for business-critical applications.

Key Features and Benefits

Flexible filtering options – Allows IT administrators to set different IM file attachment policies by user, group, workstation, network, and time of day. For example, block file attachments for MSN Messenger from the marketing team before 9:00 am and after 5:00 pm.

Automatic policy enforcement – Monitors IM file attachments automatically and allows or denies IM file transfer requests according to approved policy. Automated updates to the IM file attachment protocol list ensure accuracy and minimize administration requirements.

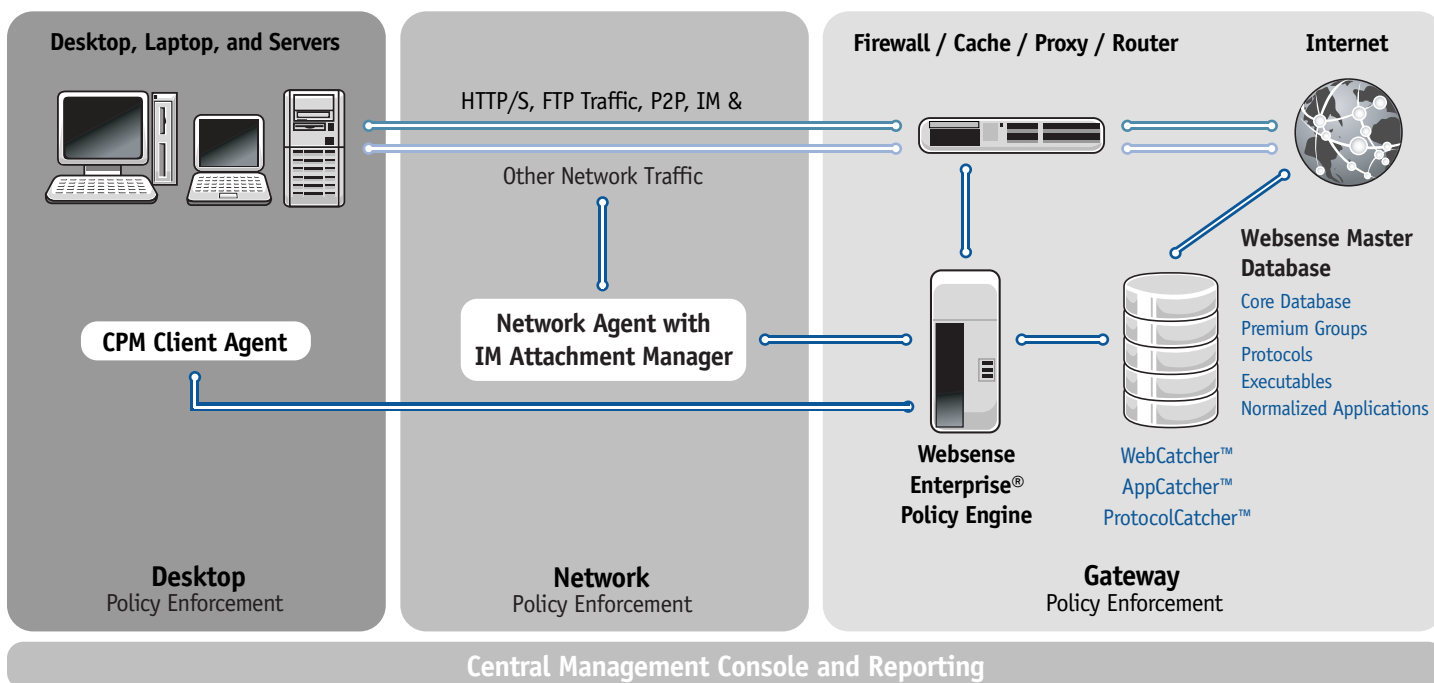
Centralized deployment – Deploys IM Attachment Manager with the click of a button in Websense Enterprise Manager. No changes to the desktop/client configuration are necessary.

Enterprise-wide IM threat detection – Analyzes real-time and historical information on employee use of IM file attachments using Websense Enterprise reporting tools including Explorer, Reporter, and Real-Time Analyzer™.

Seamless integration with Websense Enterprise – Integrates directly into the Websense Enterprise Central Management Console with no new interfaces to learn or consoles to deploy.

Websense Enterprise system requirements

IM Attachment Manager is an add-on module to Websense Enterprise and requires deployment of the Websense Enterprise Network Agent.



Download a free, fully-functional 30-day evaluation at www.websense.com/downloads today!

Websense Inc.
San Diego, CA USA
tel 800.723.1166
tel 858.320.8000
www.websense.com

Websense UK
Chertsey, England
tel +44 (0)1932. 796001
www.websense.co.uk

Websense France
Paris, France
tel +33 (0)15660. 5814
www.websense.fr

Websense Germany
Munich, Germany
tel +49 (0)89 24445. 4005
www.websense.de

Websense Japan
Tokyo, Japan
tel +813.5322.1335
www.websense.co.jp

Websense Australia
Sydney, Australia
tel +61 2 9006. 1621
www.websense.com.au

Websense Greater China
Hong Kong
tel +852.2855.8811
www.chinese.websense.com
www.prc.websense.com

Websense Latin America
Sao Paulo, Brazil
tel +55.11.4612.0798
www.espanol.websense.com
www.portugues.websense.com